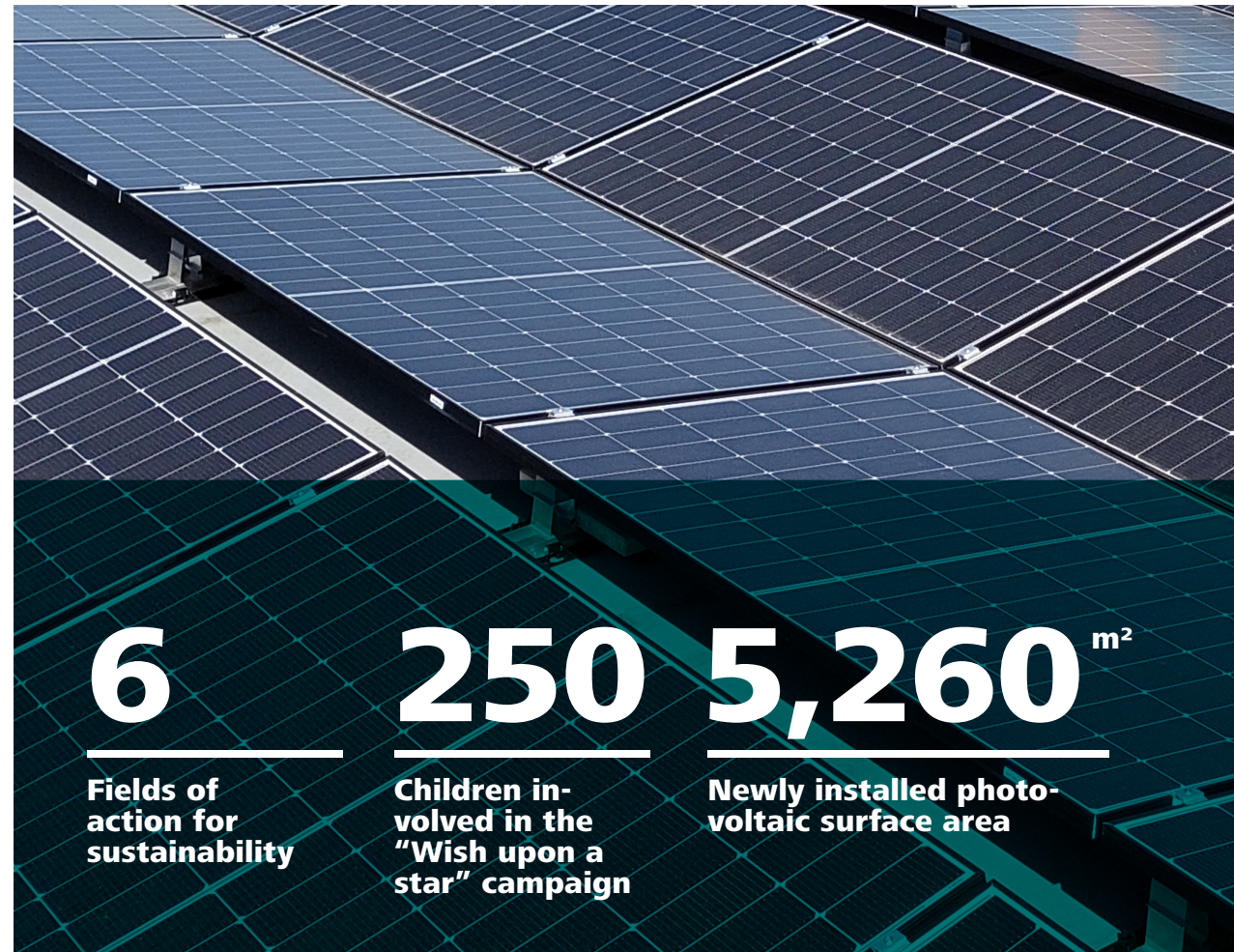
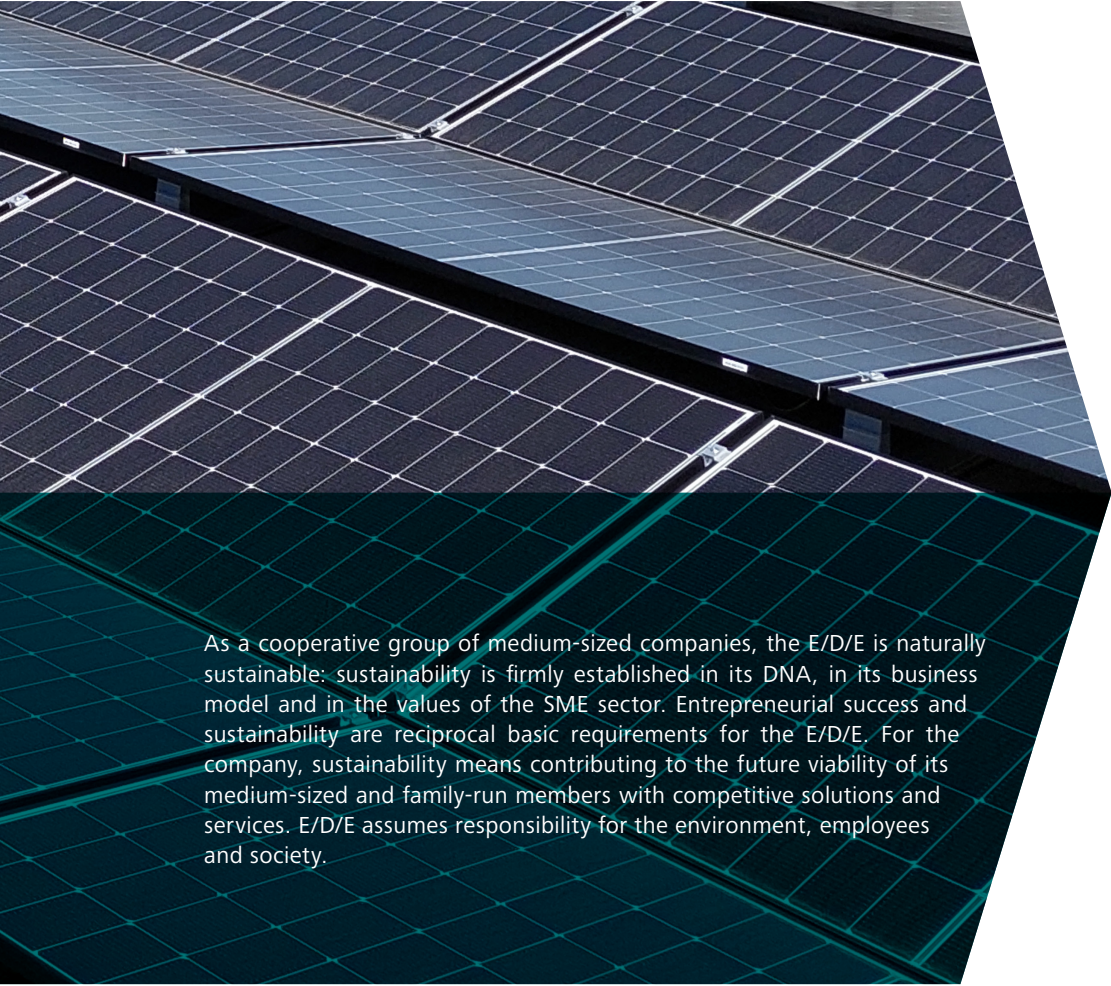


Sustainability

is a question of
attitude for us



E/D/E is involved in six areas of sustainability, including responsibility for ecologically sustainable processes – for example, in the form of energy self-sufficiency through photovoltaics.



As a cooperative group of medium-sized companies, the E/D/E is naturally sustainable: sustainability is firmly established in its DNA, in its business model and in the values of the SME sector. Entrepreneurial success and sustainability are reciprocal basic requirements for the E/D/E. For the company, sustainability means contributing to the future viability of its medium-sized and family-run members with competitive solutions and services. E/D/E assumes responsibility for the environment, employees and society.

Our claim

E/D/E's sustainability objectives are rooted in combining ecological, social and economic sustainability across the entire value chain. To this end, E/D/E has also implemented numerous sustainability activities in the six fields of action in 2024, which will have an impact within the alliance.

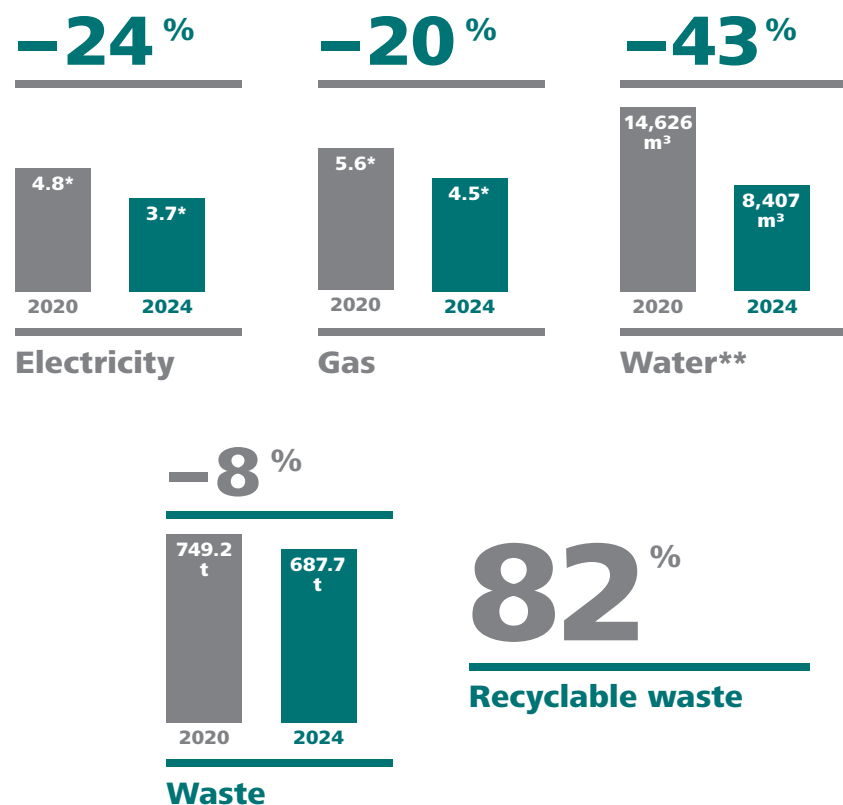
Relief from regulatory requirements

The previous year was characterised by the preparation and implementation of increasingly stringent regulatory requirements. A well-founded range of services is aimed at offering members solutions that reduce the effort required to meet regulatory requirements.

To comply with the requirements of the German Supply Chain Due Diligence Act (LkSG), the E/D/E offers and uses a powerful, AI-based software solution in collaboration with Prewave. Furthermore, the E/D/E 2024 has also expanded the Prewave offer for members not subject to the German Supply Chain Due Diligence Act (LkSG), from whom customers are now increasingly expecting effective compliance and the ability to provide information on the supply chain. E/D/E also acts early and pro-actively on upcoming issues such as the EU Deforestation Regulation (EUDR), to relieve the burden on members in their day-to-day business.

To ensure efficient sustainability reporting, the E/D/E works with the online platform "leadity," and also makes this solution available to its members via a framework agreement. This enables partners to meet the requirements of the EU Corporate Sustainability Reporting Directive (CSRD) as easily as possible.

A “Positive” minus: Conserving resources with success



* Million kilowatt hours

** Increased consumption due to burst pipes in 2020 and 2021

Knowledge transfer and communication

E/D/E maintains close and regular communication with its partners, and exchanges information in various committees and networks, particularly with regard to sustainability regulation as a whole. To impart knowledge, it initiated training courses on the German Supply Chain Due Diligence Act (LkSG) via the E/D/E AKADEMIE, for example. E/D/E has also established a permanent information section on current sustainability topics in the industrial B2B sector magazine and answers further enquiries in a personal dialogue – an offer that members and partners have increasingly taken advantage of in the past year.

In internal communications, a separate sustainability section has been created on the Intranet, which is aimed at imparting knowledge ranging from various background information and tips to a sustainability glossary. In addition, existing communication formats have been further developed and new ones established.

Certification Maintaining assured sustainability

One important milestone was reached in April 2024 with the certification of the “Assured Sustainability” seal of approval by the German Institute for Sustainability and Economy (DINO) in April 2024. E/D/E also continued its activities in the ECOPROFIT Club 2024 and both maintained and expanded its cooperation efforts with important partners such as the MITTELSTANDSVERBUND (ZGV) and the “Zukunftskreis Nachhaltigkeit”³. Networking and a constant exchange of experience are and remain of central importance to E/D/E.

Responsibility for nature and the environment

In terms of ecological sustainability, the installation of photovoltaic systems on some of the logistics halls was one of the key measures. Renewable electricity

Services for members and suppliers

Our level of ambition

We use sustainability trends and market requirements as leverage for innovation, differentiation potential and growth.

Image: WrightStudio/stock.adobe.com

Networks and partners

Our level of ambition

We promote sustainability in the development of the industrial B2B sector through our ecosystem.

Image: amnaj/stock.adobe.com

Corporate responsibility

Our level of ambition

By assuming social responsibility, we achieve an impact in the region that makes a difference.

Image: engel.ac/stock.adobe.com



Regulatory requirements

Our level of ambition

Compliance with laws and regulatory requirements is a matter of course for us.

Image: ARMMY PICCA/stock.adobe.com

Ecologically sustainable processes

Our level of ambition

We organise our processes to avoid and reduce the use of resources and to return materials and products to the cycle.

Image: Naiyana/stock.adobe.com

Responsibility for employees

Our level of ambition

We create space and optimal conditions for the employees who want to create and achieve something together. We promote performance, development and success, while assuming social responsibility.

Image: Dragana Gordic/stock.adobe.com

generation in E/D/E will begin in the current year. This is aimed at using the energy ourselves and thus further reducing our carbon footprint. The E/D/E also once again took on ecological responsibility in 2024 in the form of a climate sponsorship for a moorland project. In addition, five bee colonies with a total of around 200,000 bees moved into the E/D/E site in the middle of the year.

Responsibility for **employees**

Maintaining health and promoting well-being are high priorities in terms of the association's "Responsibility for employees". Regular health days with an extended offer for individual health care, the promotion of participation in the "Wuppertaler Schwebebahnlauf" and a wide range of company sports activities contribute to this. E/D/E also promotes the compatibility of work and family life with a new parent-child office, a daycare centre and various flexible working time models.

The topic of sustainability is firmly established in the training concept and also plays an important role in the onboarding process for new employees. They receive comprehensive insight into the sustainability objectives and measures right from the start, to sensitise them to the range of topics. The biodiversity project on the E/D/E site has been continued with the trainees and dual students, and a tree planting campaign has also been realised, for example.

Responsibility for **society**

E/D/E meets its social responsibility on many levels and by supporting a wide range of charitable projects. The E/D/E Foundation, E/D/E and its employees once again supported regional and local institutions and delivered sustainable projects in 2024. As part of the E/D/E Christmas "Wish upon a star" campaign in 2024, roughly 250 children's wishes from children's and youth homes in Wuppertal were once again fulfilled with donations of money or goods.

The first E/D/E cooperation course with the Junior University of Wuppertal was also a great success: during a three-day course, three E/D/E employees offered 14 young students exciting and comprehensive insight into topics such as sustainability, resource conservation and process chain management.



The non-profit E/D/E Foundation has once again approved scholarships for further vocational training at the "ZHH-Bildungswerk" training centre. Over the past 19 years, more than 540 scholarships have been approved, including 24 in 2024. In conjunction with the University of Wuppertal, the Foundation is also participating in the "Deutschlandstipendium", a programme of the Federal Ministry of Education and Research, for the ninth year in a row.

Sustainability priorities for 2025

Sustainability at all levels remains a central objective at E/D/E. For this reason, the focal topics are being consistently driven forward, and joint activities are being initiated in the association. Continual sustainability regulation, in particular, and the associated regulatory effort will continue to tie up many resources in the current year, not only with regard to CSRD reporting. The intention remains unchanged: to relieve the partners as much as possible of the bureaucratic burden.



The installation of the photovoltaic system is one of the key sustainability measures for 2024.